

REGIONAL CONFERENCE ON TEACHING HERITAGE CONTENTS
TEACHING EXPERIENCE IN THE AREA OF ARCHEOLOGY AND HERITAGE

Teaching and researching identity and heritage
with students



CASE OF BOSNIA

Mitja Guštin



Tempus

BIHERIT - Curricular reform of heritage sciences in Bosnia and Herzegovina

IDENTITY

WHO ARE PARENTS?

WHERE ARE THEY FROM?

AGE, SEX?

FAMILY, KULTURE GROUP

SOCIAL CLASS

RELIGION

NATION



IDENTITY

BIRTHPLACE?

ELEMENTARY SCHOOL?

HOMESTAD PLACE?

TYPICAL LUNCH?

LOCAL MONUMENTS?

LOCAL EVENTS?

FAMILYNAME OF BOTH GRANDMOTHERS? WHERE DO THEY COME FROM?



HISTORICAL BOSNIA

SOJENICE



Ripać, jun 2013



W. Radimsky, Der prähistorische Pfahlbau von Ripač bei Bihać, WMBH 5, 1897, Abb.

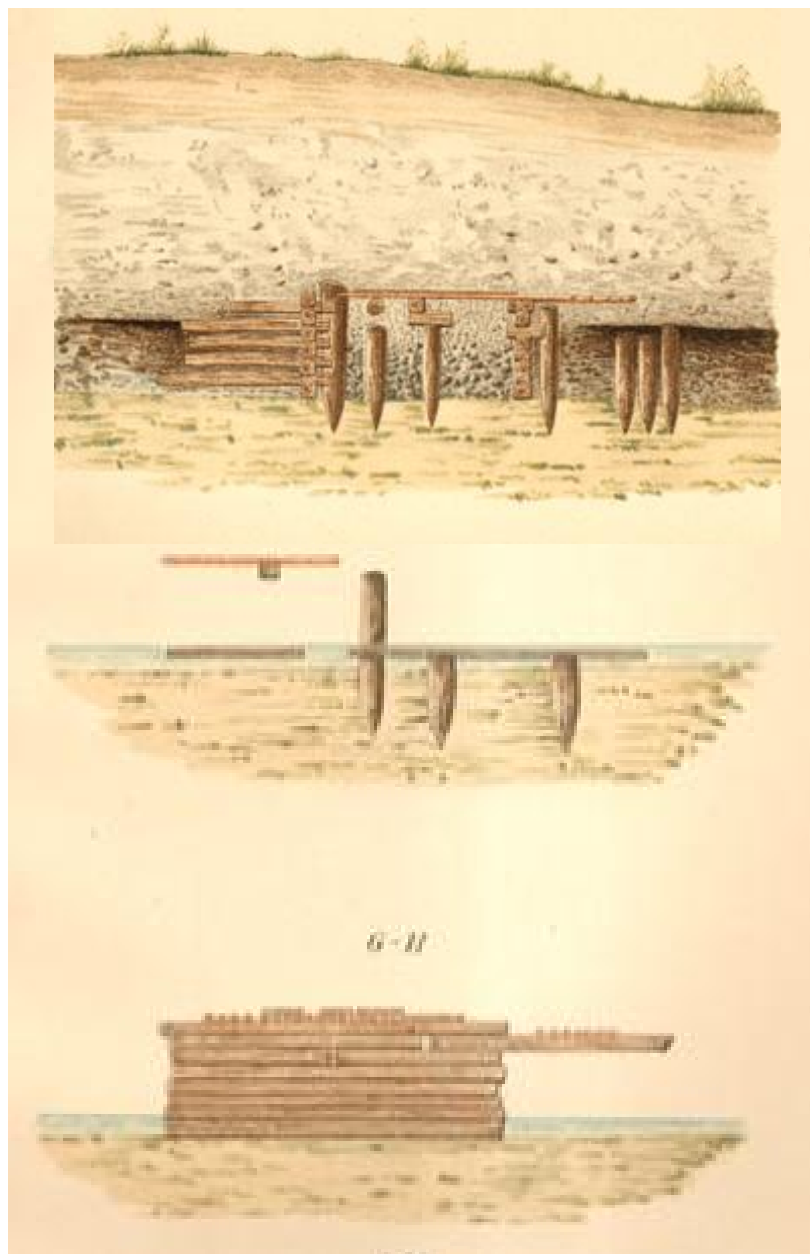
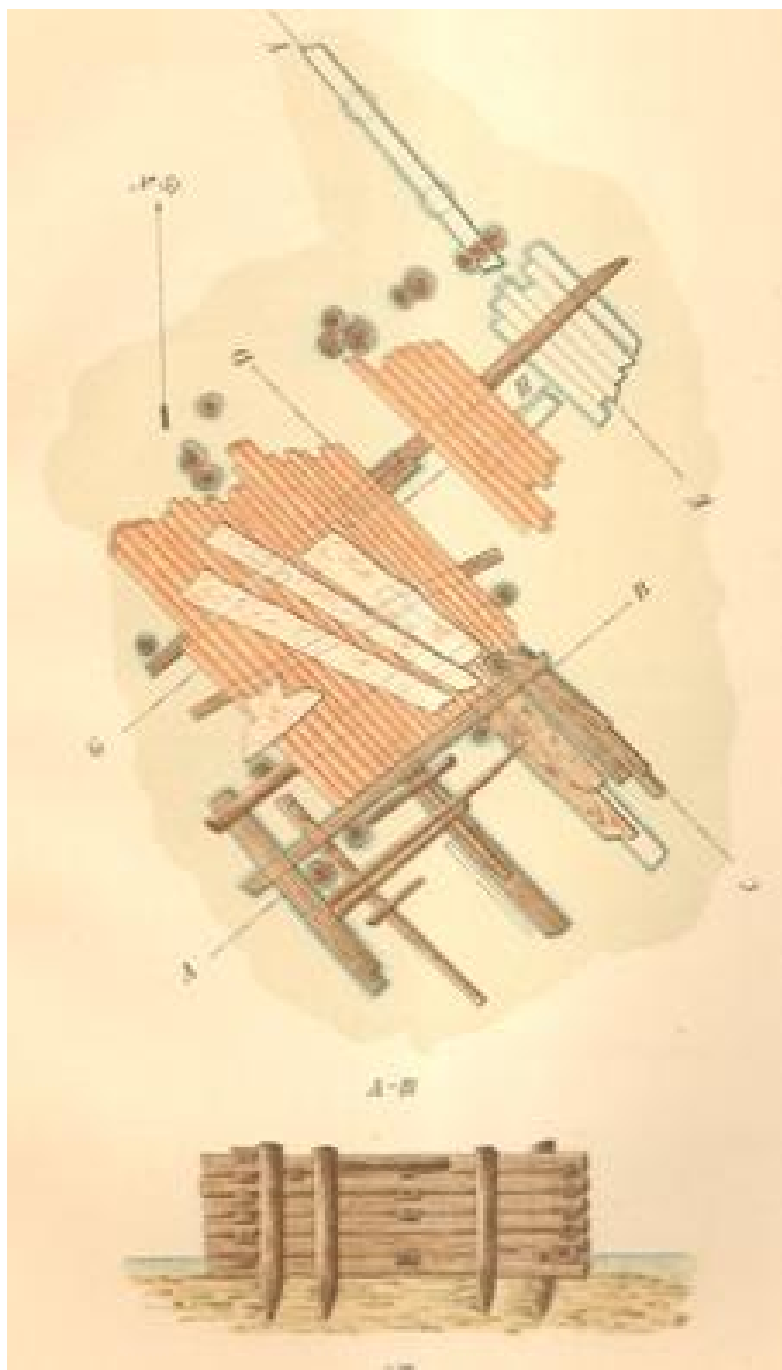


Ripač, 1895
W. Radimsky, Der prähistorische Pfahlbau
von Ripač bei Bihać, WMBH 5, 1897.

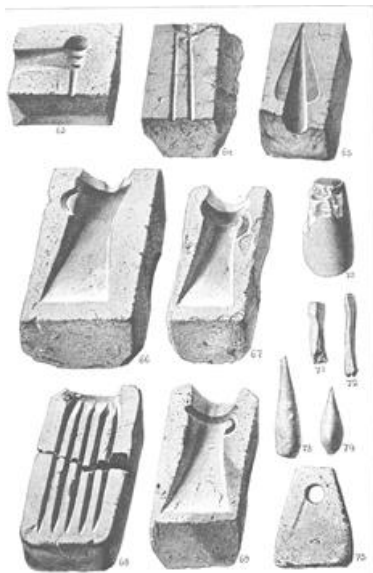


a) Ansicht der Grabung mit oberen und unteren Pfählen.



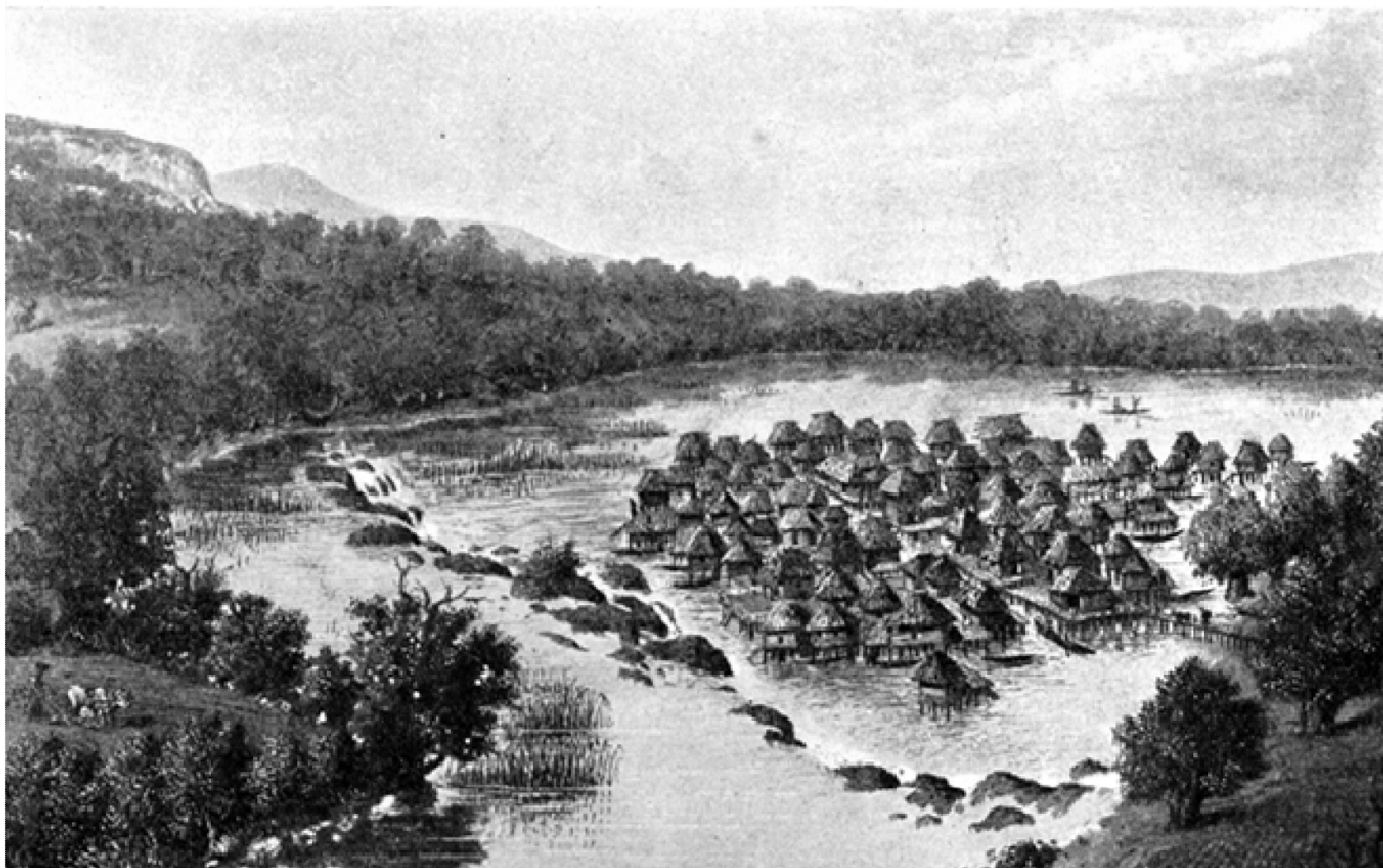


Ripač, 1895
dokumentacija praiistorijskih sojenica

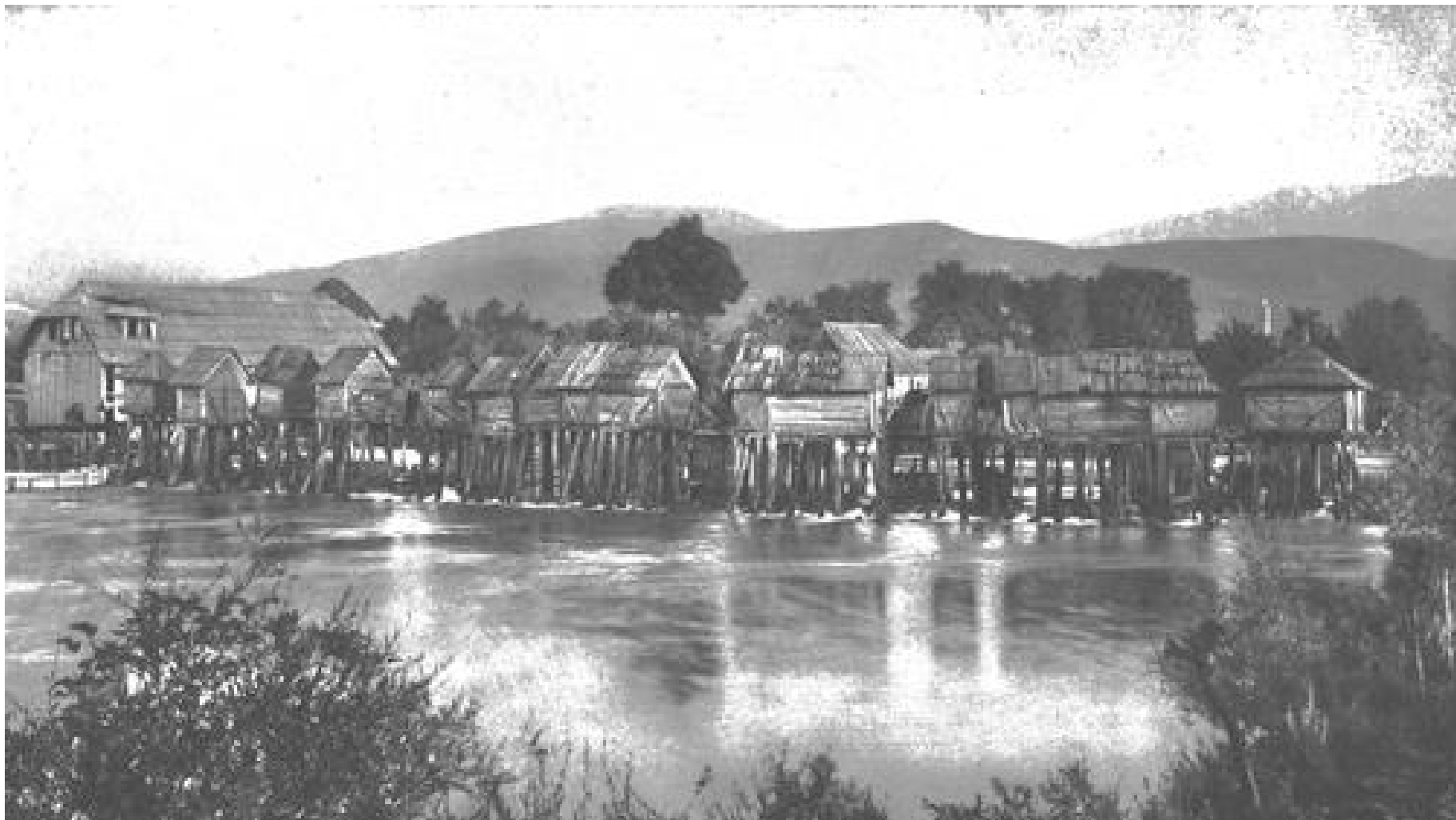


Ripač, 1895

arheološki nalazi



RIPAČ, PRIKAZ SOJENIČKOG NASELJA KRAJEM BRONČANOG DOBA
V. Čurčić, Narodno ribarstvo u Bosni i Hercegovini, Sarajevo 1910, sl. 1.



BIHAČ, MLINOVI, OKO 1895. GODINE

W. Radimsky, Der prahistorische Pfahlbau von Ripač bei Bihać, WMBH 5, 1897, Taf. 4. .



TUZLA, REKOSTRUKCIJA SOJENIČKOG NASELJA
IDENTITET I TURIZAM

TRADITIONAL, VERNICULARE BOSNIA

BRVNARE, VODENICE



Dobrlin-Drvar, stovarište balvana na vrelu Ribnika, spremljeno za plavljenje



Slika 2. Kuća sa krovom „na dumu“ i zgrada u Gor. Dolini, kot. Bos. Gradiška.

V. Čurčić, Narodno ribarstvo u Bosni i Hercegovini, Sarajevo 1910, sl. 2.



GORNJA DOLINA,
V. Čurčić, Rezente Pfahlbauten von Donja dolina in Bosnien, 1913, Fig. 18.

Fig. 18. Pfahlbauehöft des Mijo Vidić aus Gornja Dolina.



V. Čurčić, Rezente Pfahlbauten
von Donja dolina in Bosnien,
1913, Fig. 11..





A. Bugarski, Bosanska Krajina oko 1981..



Dubica kod Mrkonjić Grada, oko 1981.



Palačkovci



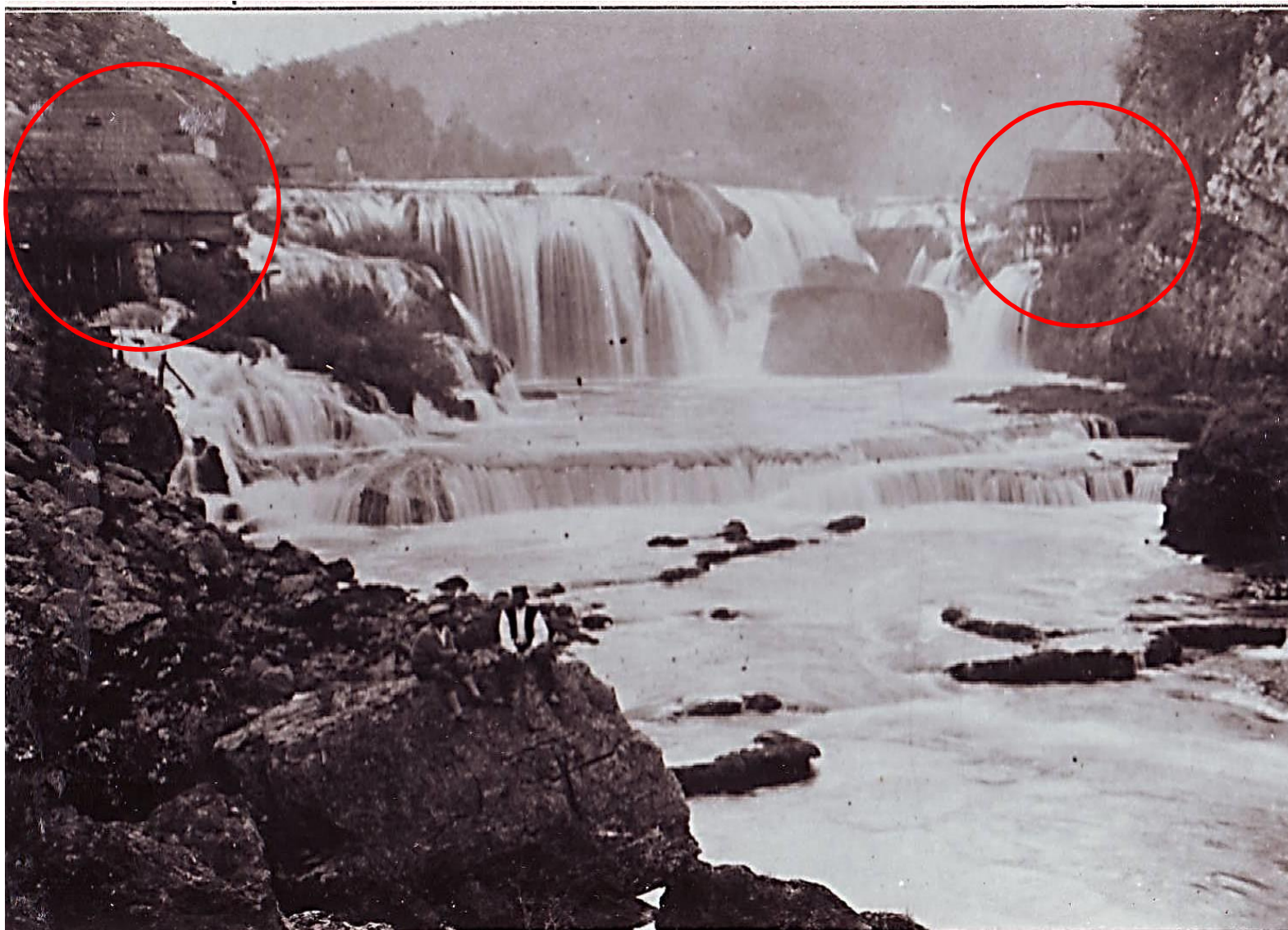
Bužim, danas



Banja Luka, oko 1935



Okolina **Banja Luke**



Štrbački buk, oko 1920

Štrbački buk,
2013





Štrbački buk,
jun 2013



A. Bugarski, Majdan planina oko 1981..



USKORO
Mitja Guštin, Vladimir Djukanović
POTOČARE BOSANSKE KRAJINE
Sarajevo 2014

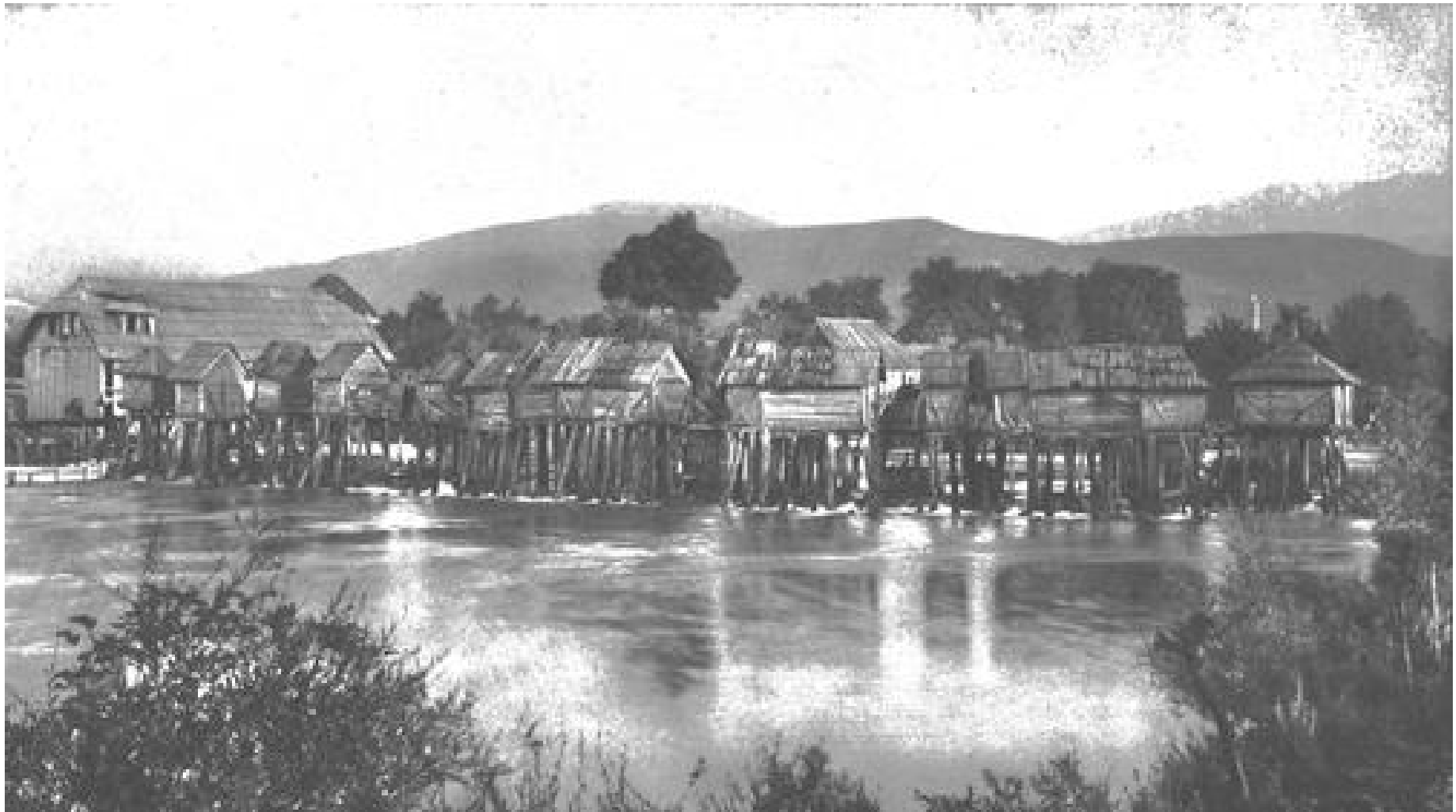


MLINČIĆI KOD JAJCA,
NEKAD I DANAS



Ripač, oko 1895

W. Radimsky, Der prähistorische Pfahlbau von Ripač bei Bihać, WMBH 5, 1897, Taf. 3.



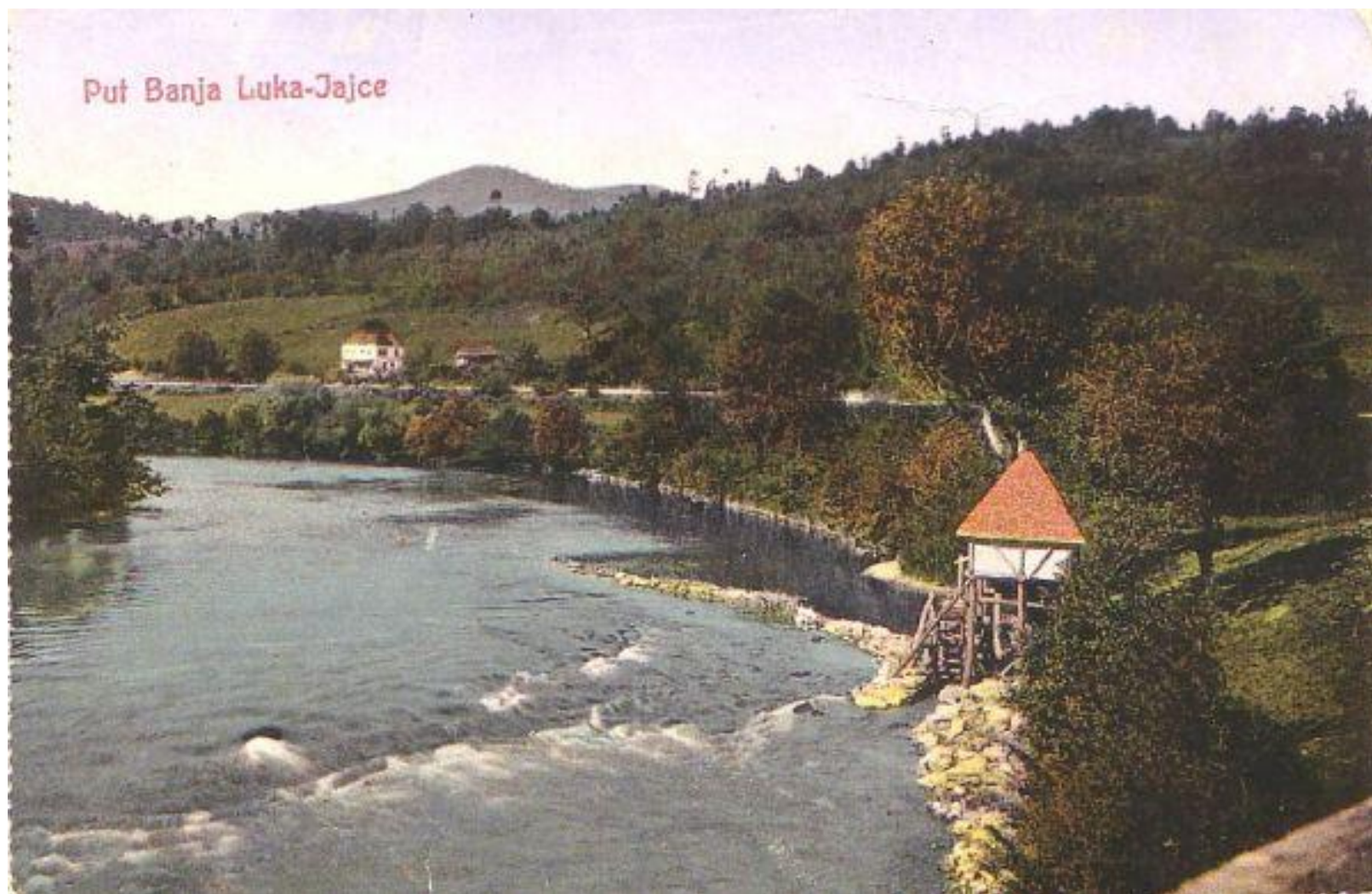
BIHAĆ, mlinovi, oko 1895

W. Radimsky, Der prahistorische Pfahlbau von Ripač bei Bihać, WMBH 5, 1897, Taf. 4. .



Gluha Bukovica,
Travnik

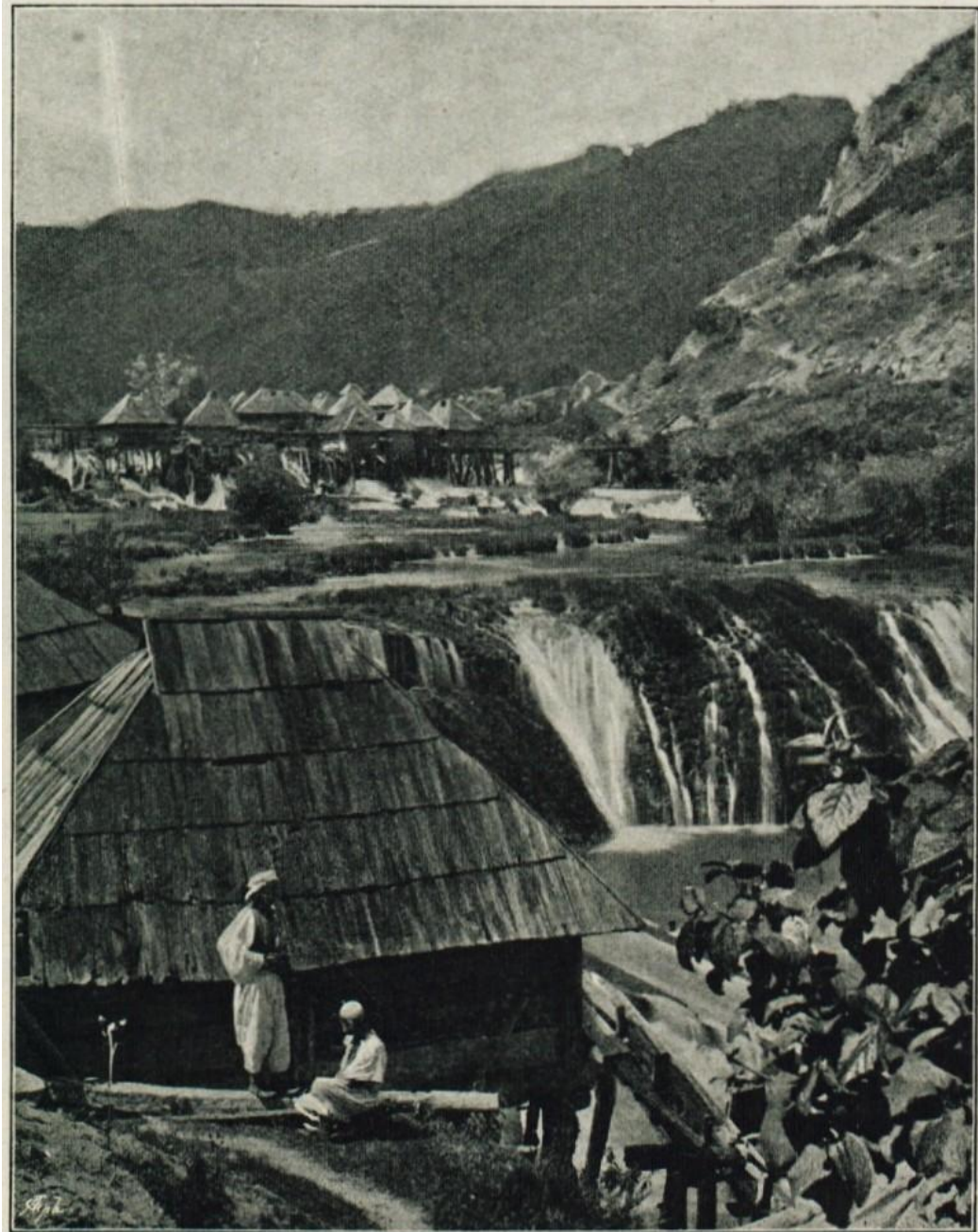
Put Banja Luka-Jajce





Bosanska Krupa

Spahići kod Bihaća
Renner,
Durch Bosnien, 1897





Mlinčiči na Uni



Potočare.



Šipovo

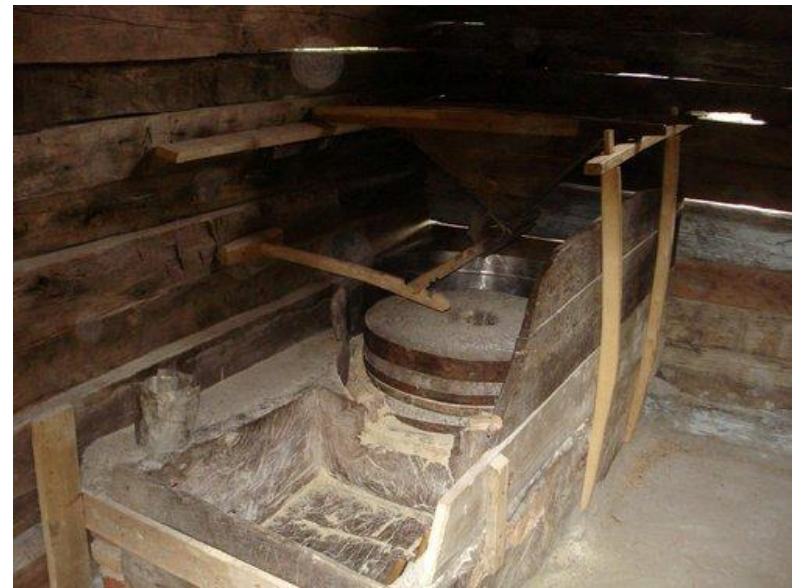




Mlinčiči, Otoka



Ljubija, junij 2013



Sokolovo



Mlinčiči kod Jajca





Na Sani

MEDIEVAL/OTTOMAN BOSNIA



Travnik, oko. 1900.

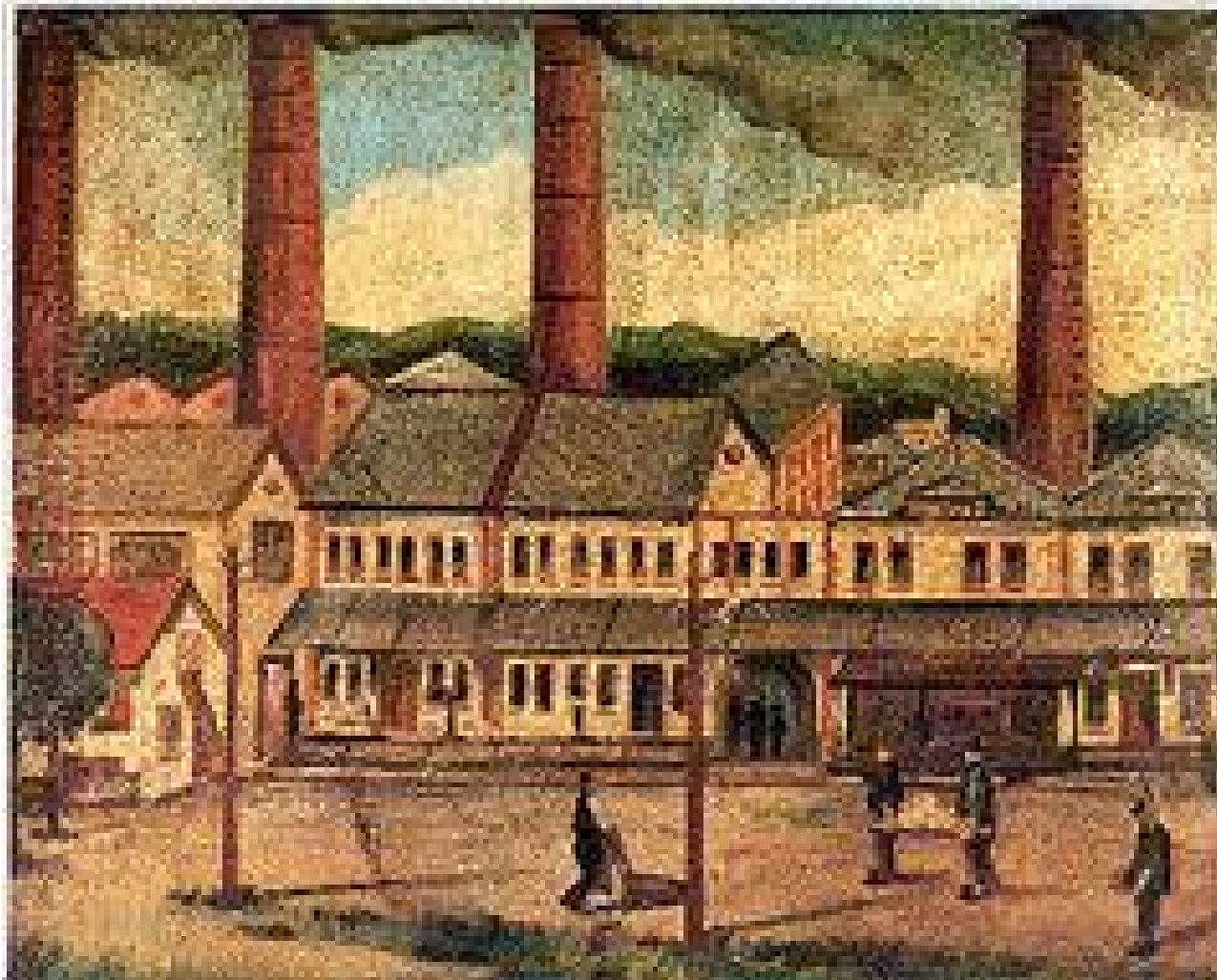


TUZLA, KRAJEM 19. VEKA



Tuzla, danas.....

INDUSTRIAL/AUSTRIAN BOSNIA



TUZLA, KRAJEM 19. VEKA



TUZLA, KRAJEM 19. VEKA I DANAS



TUZLA, KRAJEM 19. VEKA



PRIJEDOR, TODAY

THE NEW AGE, AFTER II WORDL WAR



Sretno
sa narodnom baštinom
I savremenm arhitekturom!

Plakat
Ministarstva građevina 1947 godine.
Avtor: Juraj Neihart



Vareš, arhitektura: Juraj Neihart



TUZLA , JUĆE



TUZLA , DANAS



TUZLA , DANAS



VUČKO, OLIMPIJSKO SARAJEVO 1984